

VX Firmware Upgrade Guide

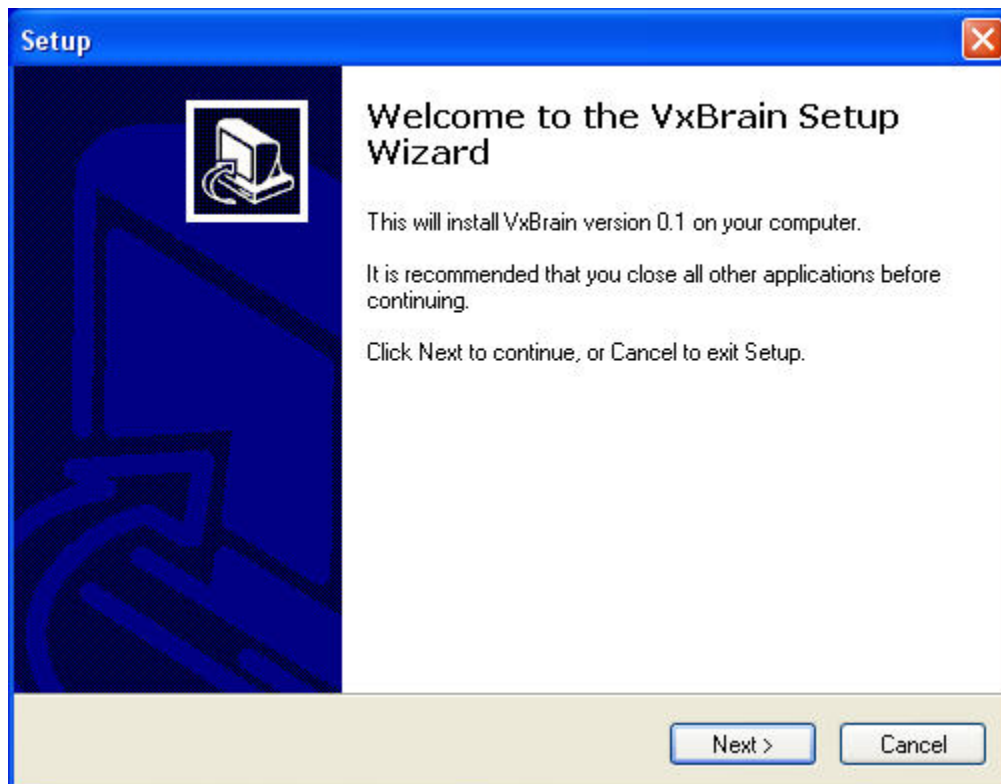
Update Note

VX Firmware is used to improve and recompose the function of VX5/6/7/8 keyboards.

Update process:

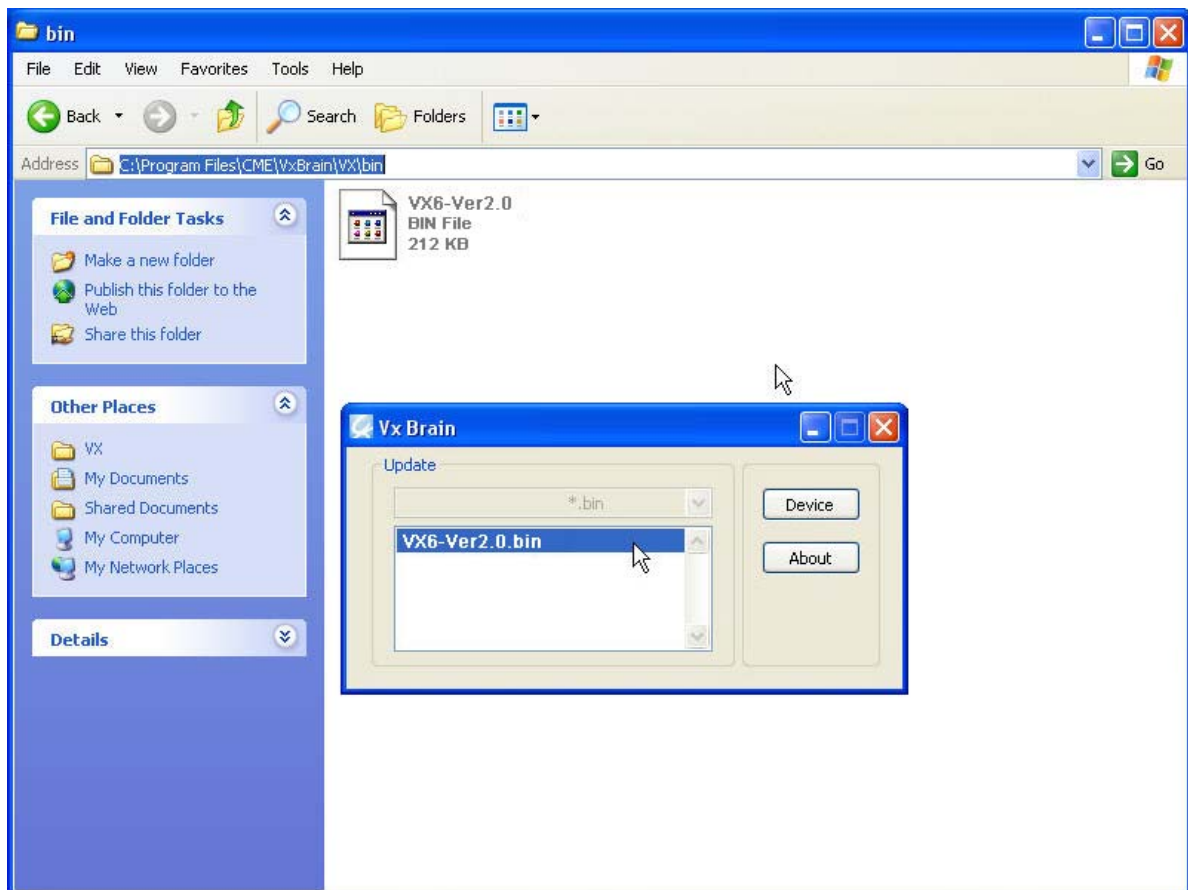
1. VX Brain Installation

Please double click the setup file, and follow the instructions to complete the installation of VX Brain.



2. The VX Firmware Placement

The default installation path of VX Brain is "C:\Program Files\CME\VX Brain\". Here you can find the "VX\bin" folder. Please copy the reciprocal "*.bin" file that need to flash VX keyboards to this folder.

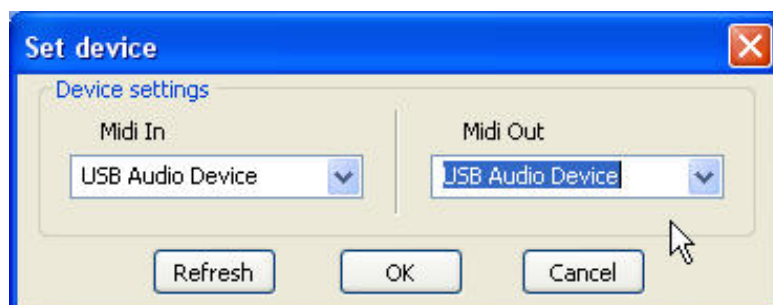


3. VX Firmware Update

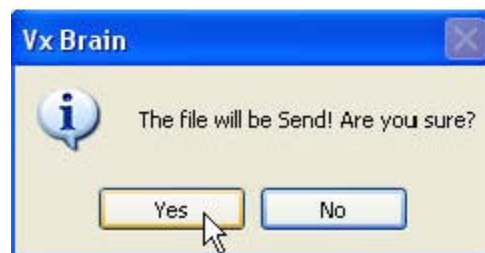
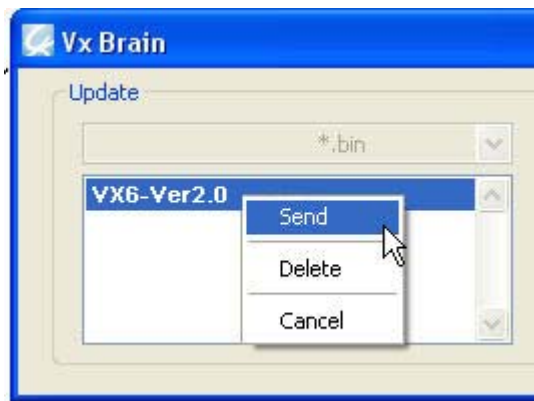
Use the USB cable to connect the VX keyboard to the computer, then turn on the VX. Double click the icon of VX Brain to run the software.



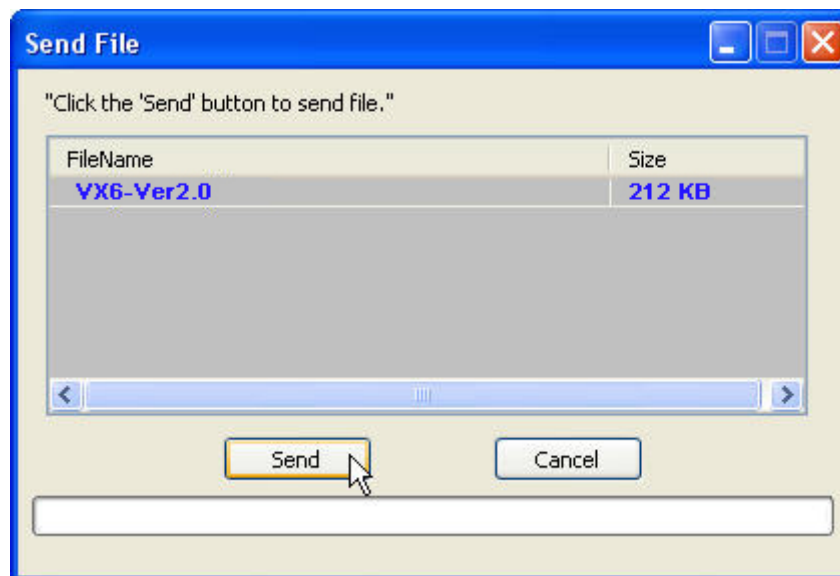
Software setting: Click the "Device" button of VX Brain, then set the input and output device to "USB AUDIO DEVICE", then click "OK".



Find the firmware file that applies to flash in the file list, double click this file. Choose "send" option, then confirm.



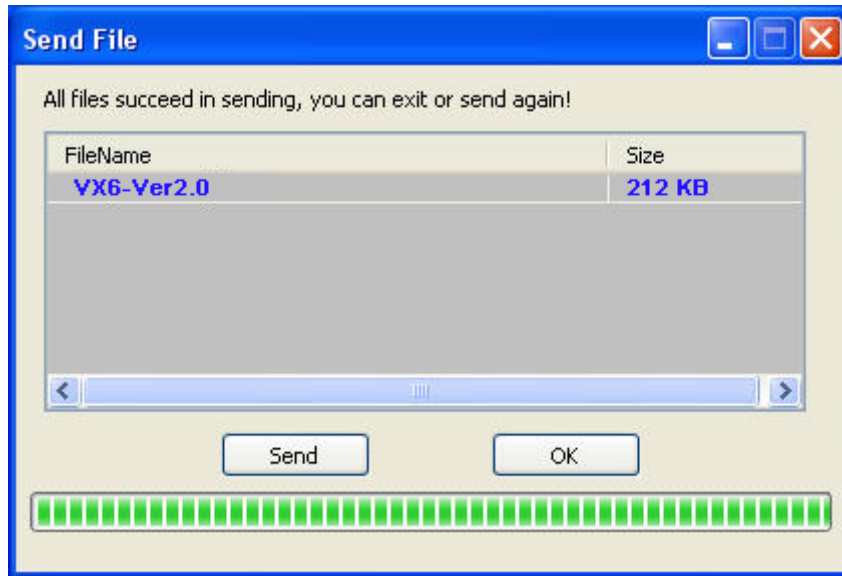
Then a new layout appears named "Send File", click "Send".



The flash process will now begin.

IMPORTANT! Do not operate any other program on either the computer or VX during the update process!

Click "OK" after the firmware file has transferred completely. The VX keyboard will restart automatically.



Close the VX Brain and turn off the VX keyboard. Then turn on the VX keyboard while pressing the two "OCTAVE" buttons at the same time.

Please Note: This operation will revert all user settings to factory default!

4. Manual VX Update mode.

If VX can't be updated by VX Brain, you can use this method to update the VX Firmware. Press "UTILITY" and "EXPANSION" buttons, and turn on the VX keyboard.



The VX LED will display the Flash ROM message.



Then implement the VX Firmware update process as in point 3 above.

5. Checking VX Firmware Version

Press the MASTER and ASSIGN buttons, and turn on the VX keyboard.



The VX LED will display the Firmware Version.



Security Notice

Please do not use any firmware file other than that downloaded from the CME website:
<http://www.cme-pro.com>.

Central Music Co
2008-10