

UF50/60/70/80 Firmware Upgrade Guide

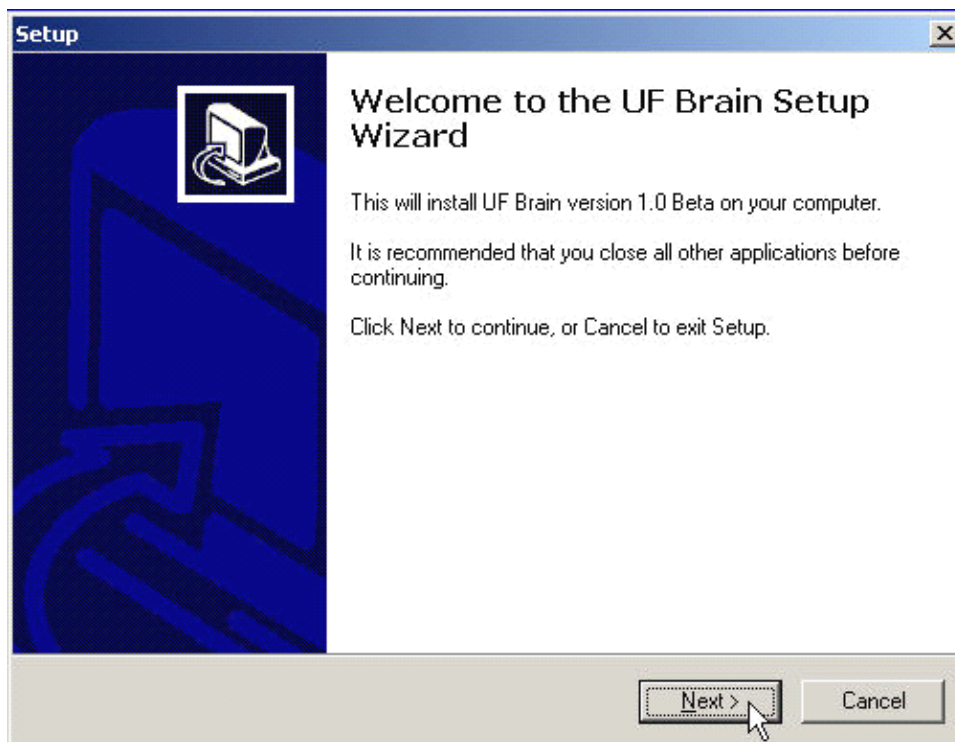
Update Note:

UFx0 Firmware is used to improve and recompose the function of UF50/60/70/80 keyboards.

Update process:

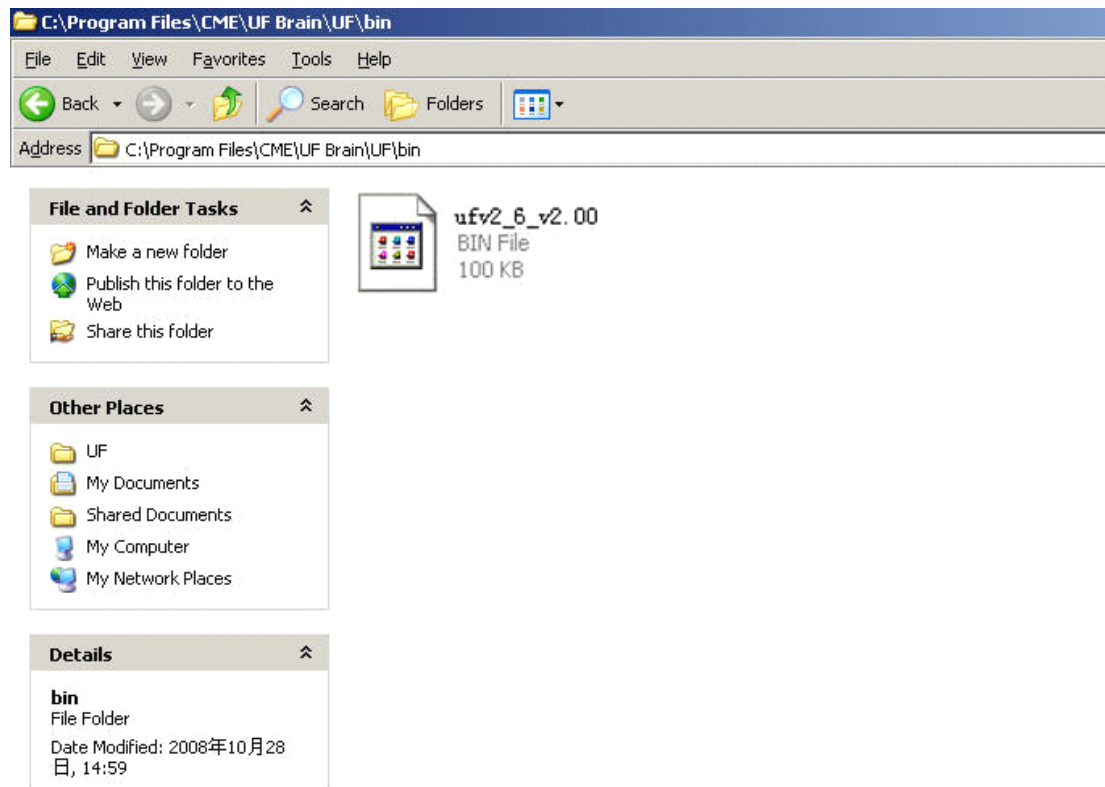
1. UF Brain Installation

- Please double click the setup file, and follow the instructions to complete the installation of UF Brain.



2. The UFx0 Firmware Placement

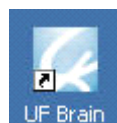
- The default installation path of UF Brain is "C:\Program Files\CME\UF Brain ". Here you can find the " UF\bin" folder. Please copy the reciprocal version ".bin" file that is needed to flash UFx0 keyboards to this folder.



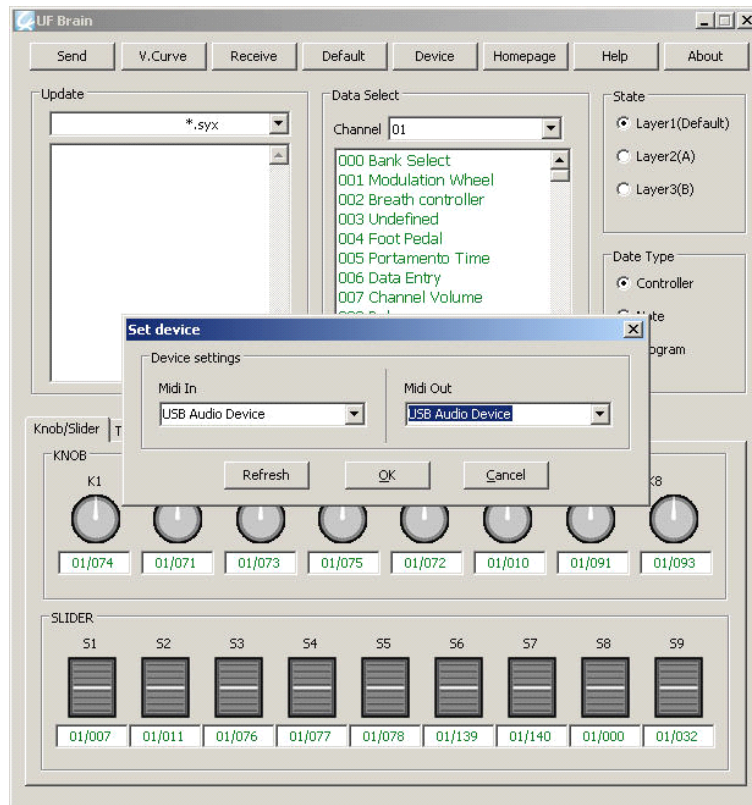
3. UFx0 Firmware Update

Connect your computer to the UFx0 keyboard using a USB Cable. Press “F1” and “F3” two buttons together, then turn on Ufx0 keyboard. You will see the letters “UPd” appear on the LED of UFx0 keyboard.

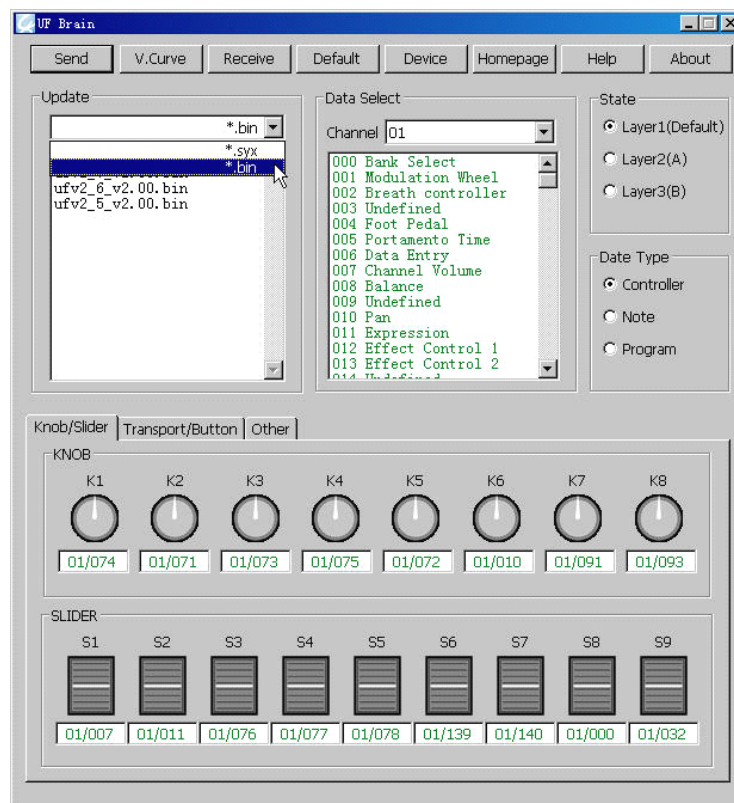
- Please double click the icon of UF Brain to run the software.



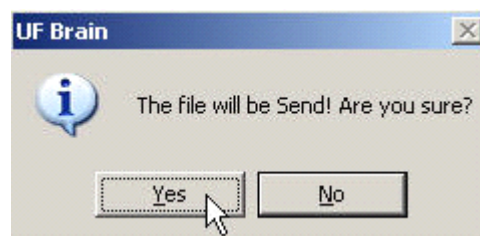
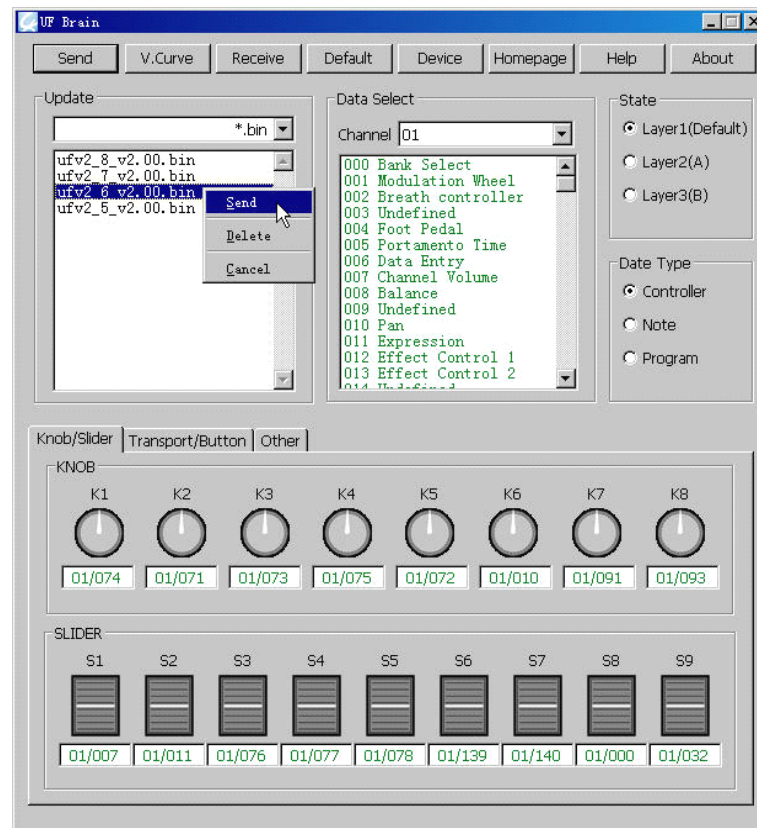
- Software setting: Click the "Device" button of UF Brain, set the input and output device to "USB AUDIO DEVICE", then click "OK".



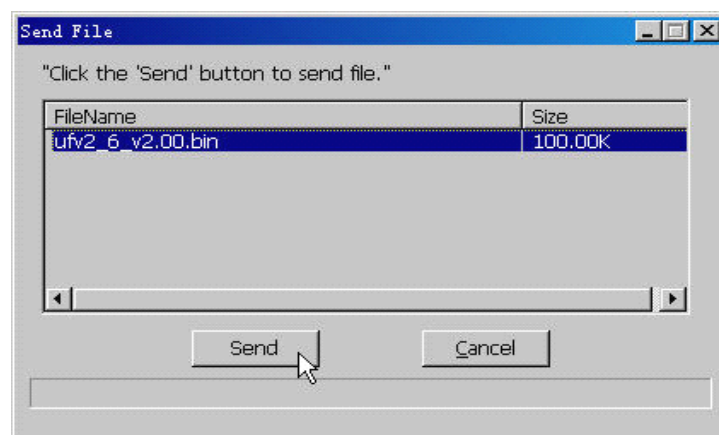
- Please choose the bin option in the list.



- Find the firmware file that applies to flash in the file list, double click this file. Choose “Yes” option, then confirm.



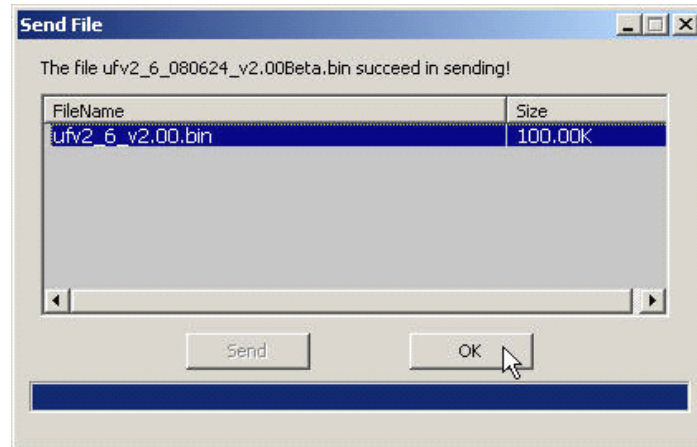
- Then a new layout appears named “Send File”, click “Send”.



- The flash process will now begin.

Important!: Maintain the USB connection between UFx0 keyboard and computer, and DO NOT to operate any other program on either the computer or U-Key during the update process!

- Click "OK" after the firmware file has transferred completely.



- Close the UF Brain and turn off the UFx0 keyboard. Then turn on the UFx0 keyboard while press the two "OCTACE/TRANSPPOSE" buttons at the same time.

Please note: This operation will revert all user settings to factory default!

4. Checking UFx0 Firmware Version

- Press the "EXIT" and "ENTER" buttons together on the keyboard, then turn on the UFx0 keyboard.
- The UFx0 LED will display the latest Firmware Version installed..

Please Note: When you have checked your UFx0 Firmware version, reboot the UFx0 keyboard.

It will open in the normal Master mode.

Disposal Notice:

Please do not use any firmware file other than that downloaded from the CME website.(<http://www.cme-pro.com/en>)

Central Music Co (CME)

2008-11