

U-Key Firmware Upgrade Guide

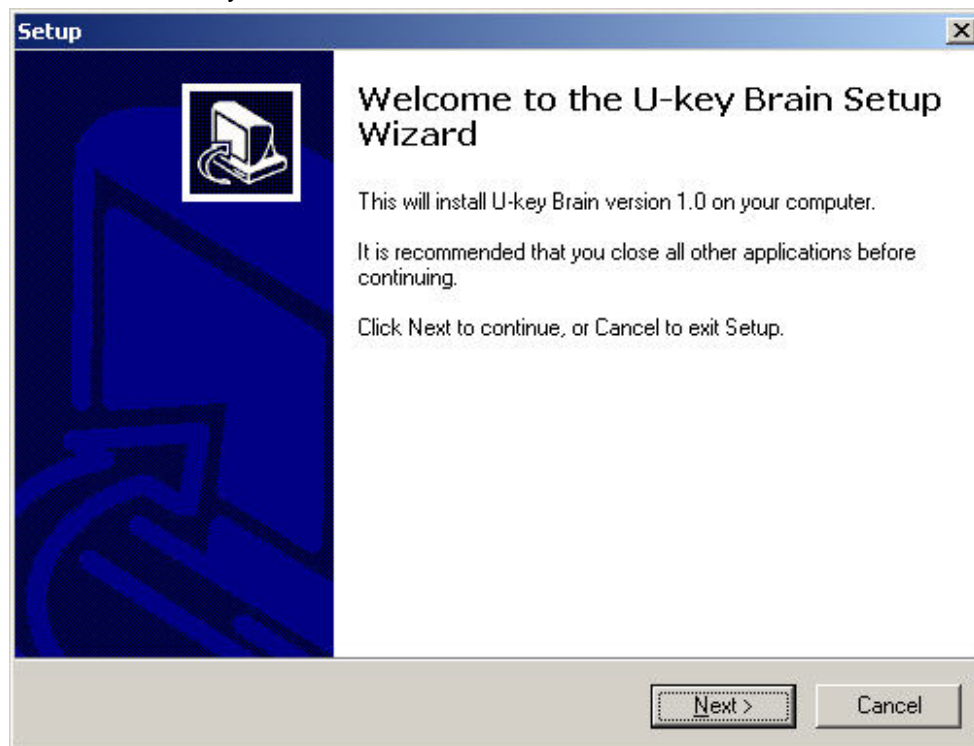
Update Note

U-Key Firmware is used to improve and recompose the function of U-Key Mobiltone USB MIDI keyboard.

Update Process

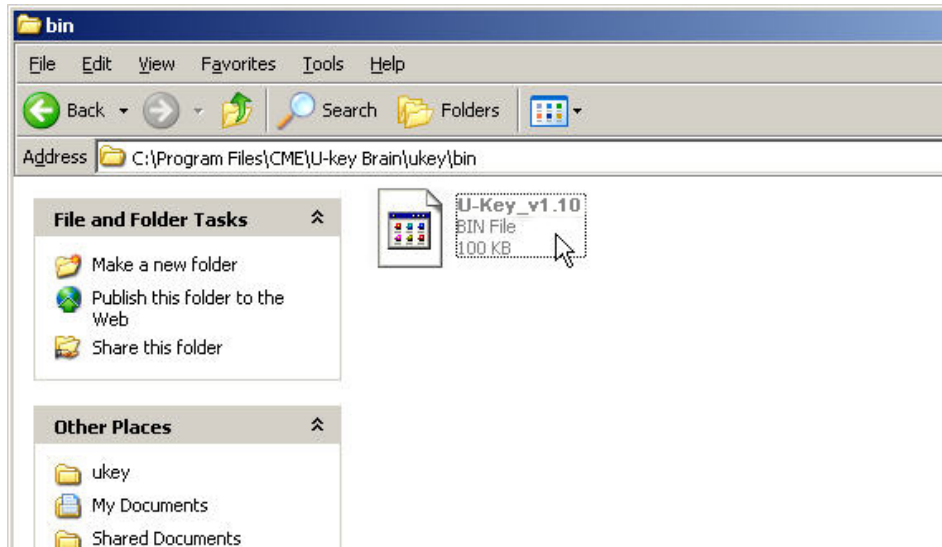
1. U-Key Brain Installation

- Please double click the setup file, and follow the instructions to complete the installation of U-key Brain.



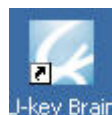
2. The U-Key Firmware Placement

- The default installation path of U-Key Brain is "C:\Program Files\CME\U-key Brain". Here you can find the "bin" folder. Please copy the reciprocal version "*.bin" file that is needed to flash U-Key keyboard to this folder.



3. U-Key Firmware Update

- Please connect computer and U-key by USB Cable. Press "OCTAVE/TRANPOSE" and "SHIFT/BANK" three buttons together, then turn on U-Key. You will see the letter as "UPd" appear on the LED of U-Key.
- Please double click the icon of U-Key Brain to run the software.



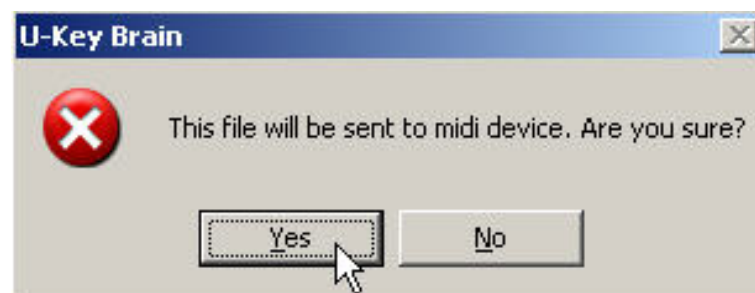
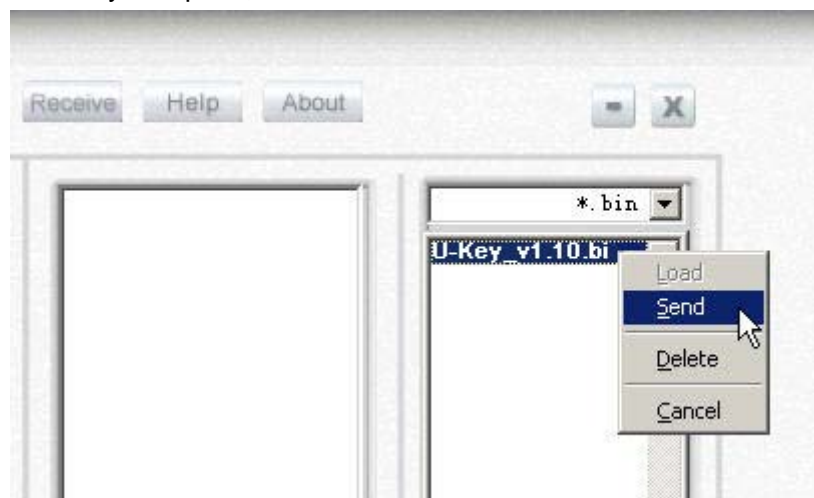
- Settings of the software: Click the "Device" button of U-Key Brain, then set the input and output device to "USB AUDIO DEVICE", then click "OK".



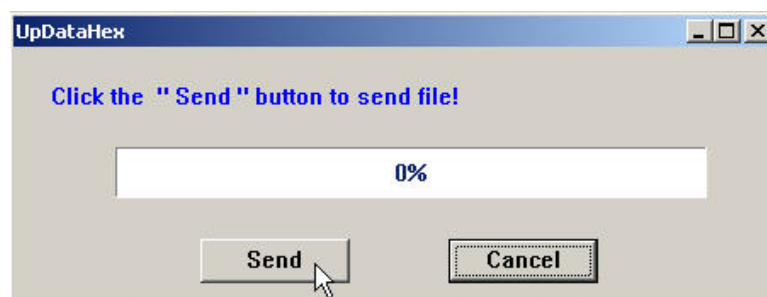
- Please choose the bin option in the list.



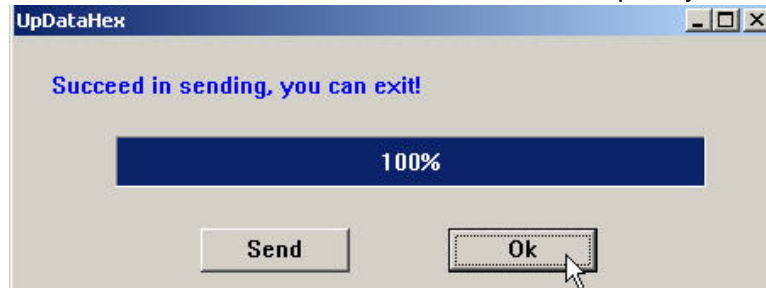
- Please find the firmware file that applies to flash in the file list, double click this file. Please choice "yes" option, then confirm.



- Then a new layout will appear named "Send File", click "Send".



- The flash process will now begin.
PS: Please maintain the USB connection between U-Key and the computer, DO NOT operate any other program on the computer or U-Key during the update process!
- Click "OK" after the firmware file has been transferred completely.



- Close the U-Key Brain and turn off the U-Key keyboard. Then turn on the U-Key keyboard while pressing the two "OCTAVE" buttons at the same time.

Please Note: This operation will reset all user settings to factory default!

4. Checking VX Firmware Version

- Please press together the U-CTRL button and the last right key (top key) of keyboard, then turn on the U-Key keyboard.
- The U-Key LED will display V1.0..

PS: When you have checked your U-Key Firmware version, please reboot your U-Key. The U-Key will move into the natural Master mode.

Security Notice:

Please do not use any firmware file other than that downloaded from the CME website:

<http://www.cme-pro.com/en>.

Central Music Co (CME)

2008-10