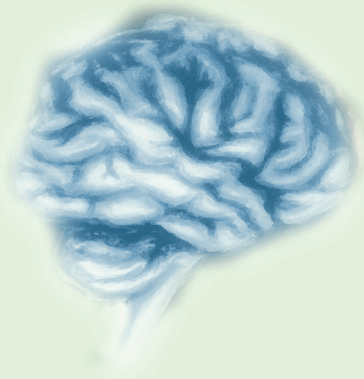


Bitstream 3X

HIGH PERFORMANCE MIDI CONTROLLER



Motion Sampler

It allows the recording and playing of your the way you moved you controls, in real time !

That means you can automate some controls movements so you have your hands free to control other functions of the Bitstream 3X

It allows the recording and playing of your the way you moved you controls, in real time !

That means you can automate some controls movements so you have your hands free to control other functions of the Bitstream 3X

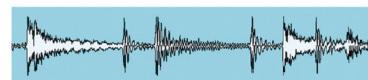
8 parallel and independent tracks
Length from half a measure up to 4 (half a measure step)
Independent length for every track
Internal or external MIDI synchronization
MIDI and/or USB output for each track
One shot or loop mode sample
Advanced graphical display

Sampling available on any control of the Bitstream 3X (knobs, sliders, buttons, ribbon, cross-fader, joystick)



Software & hardware support

- Plug and Play, no extra driver required
- Dedicated configuration software
- 13,000 Presets for a huge variety of synths and software
- Firmware upgrader software
- All software are available on Mac, Windows, Linux



Waveform generator

The LFO (Low Frequency Oscillator or Waveform Generator) allows to generate different types of waves: sine, square, triangle, or random.

The wave generated by the LFO is considered as a potentiometer, and therefore can be inserted into any MIDI event defined by the user. This feature of the Bitstream 3X allows to automatize a MIDI control without tweaking it by hand, the value of the control is updated continuously and automatically.

Access to all parameters

All of these waveforms can be adjusted in real time in Amplitude, Offset and Frequency, this offers a flexible way to configure the parameter to control.

The MIDI events generated by the LFO can be assigned to the different MIDI and USB outputs of the Bitstream 3X.

As all the other Bitstream 3X automations, the LFO can be synchronized from the internal time base, as well as from the external MIDI or USB inputs, this allows to integrate the Bitstream 3X in any MIDI environment

Build in arpeggiator

The Bitstream 3X arpeggiator is way more than a simple arpeggiator, it features many rhythms, accents banks, and a lot of parameters, among which :

Rhythm (selection of the rhythm model)
Accent (selection of the accent model)
Gate (length of the generated notes)
Melody (Generated phrase ensemble)
Transpose (Notes pitch)
Range (Notes range setting)



Resolution (Synchronization speed)
Direction (up/down/up-down/random/custom/...)
Synchronization (Keyboard, internal...)
Velocity (Notes velocity)
Swing (Groove)
Offset
MIDI Channel...

All these parameters are accessible either through the automation dedicated knobs and buttons or by using the menus.